





NOVA



3024 Wynn Circle
Lot 2473 - 24' - 2,358 sq. ft.
3 Bedrooms - 3.5 Bathrooms



WESTHAVEN

187 Front Street, Suite 100 | Franklin, Tennessee 37064
615-599-1764 | WesthavenTN.com



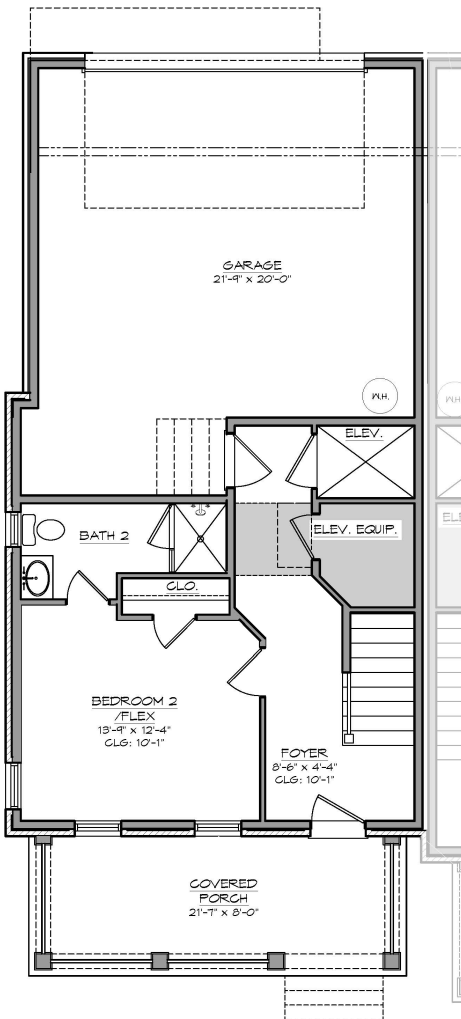
SOUTHERN LAND
COMPANY

NOVA

Lot # 2473 | 3024 Wynnn Circle Franklin, Tennessee 37064



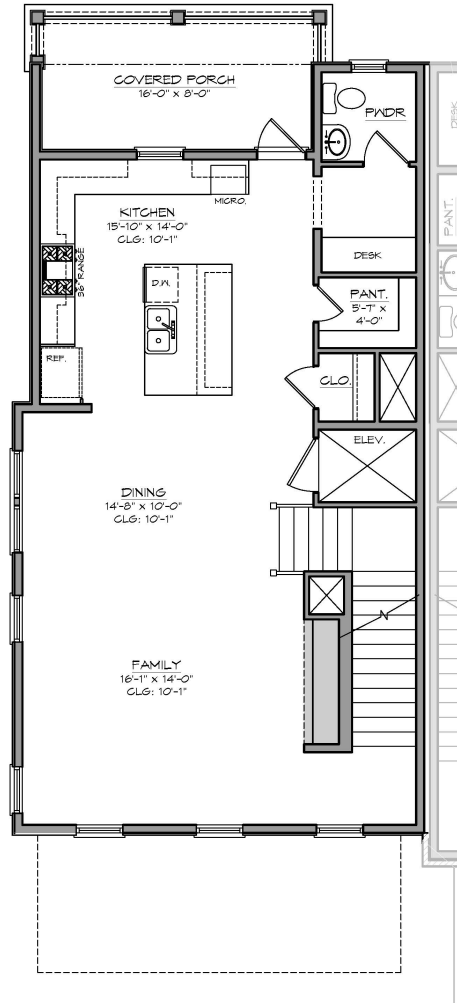
WESTHAVEN



WH2473

LOWER LEVEL PLAN

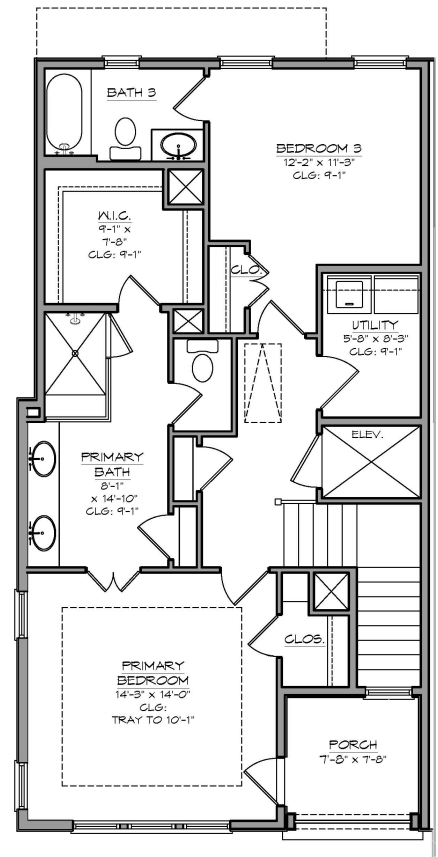
515 Sq. Ft.



WH2473

MAIN LEVEL PLAN

943 Sq. Ft.



WH2473

UPPER LEVEL PLAN

900 Sq. Ft.



STOCKHOLM



3018 Wynn Circle
Lot 2474 - 22' - 2,364 sq. ft.
3 Bedrooms - 3.5 Bathrooms



WESTHAVEN

187 Front Street, Suite 100 | Franklin, Tennessee 37064
615-599-1764 | WesthavenTN.com



SOUTHERN LAND
COMPANY



VOLUNTEER



3012 Wynn Circle
Lot 2475 - 22' - 2,250 sq. ft.
3 Bedrooms - 3.5 Bathrooms



WESTHAVEN

187 Front Street, Suite 100 | Franklin, Tennessee 37064
615-599-1764 | WesthavenTN.com



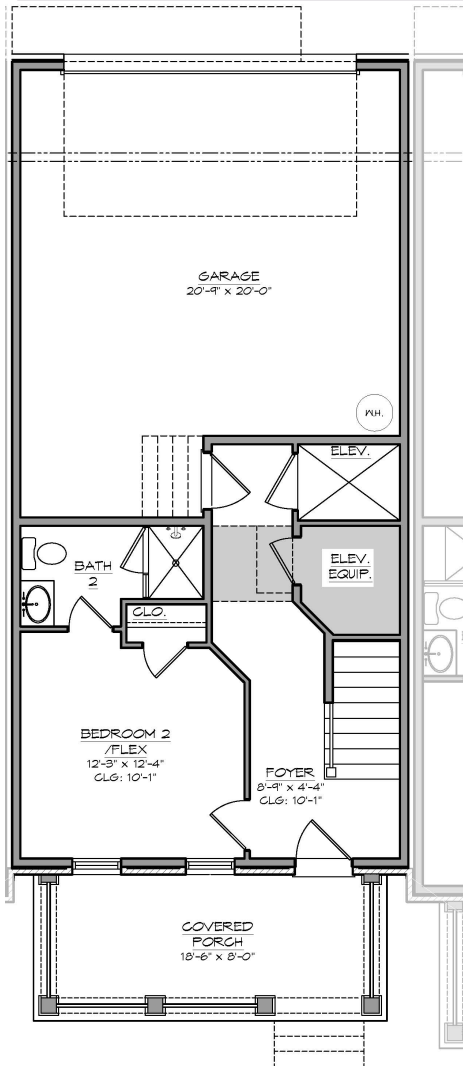
SOUTHERN LAND
COMPANY

VOLUNTEER

Lot # 2475 | 3012 Wynnn Circle Franklin, Tennessee 37064



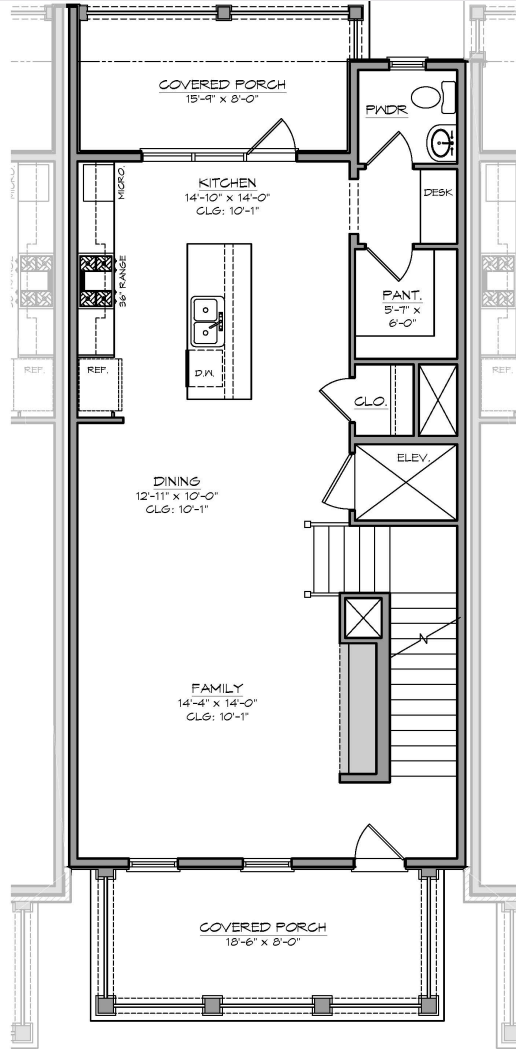
WESTHAVEN[®]



WH2475

LOWER LEVEL PLAN

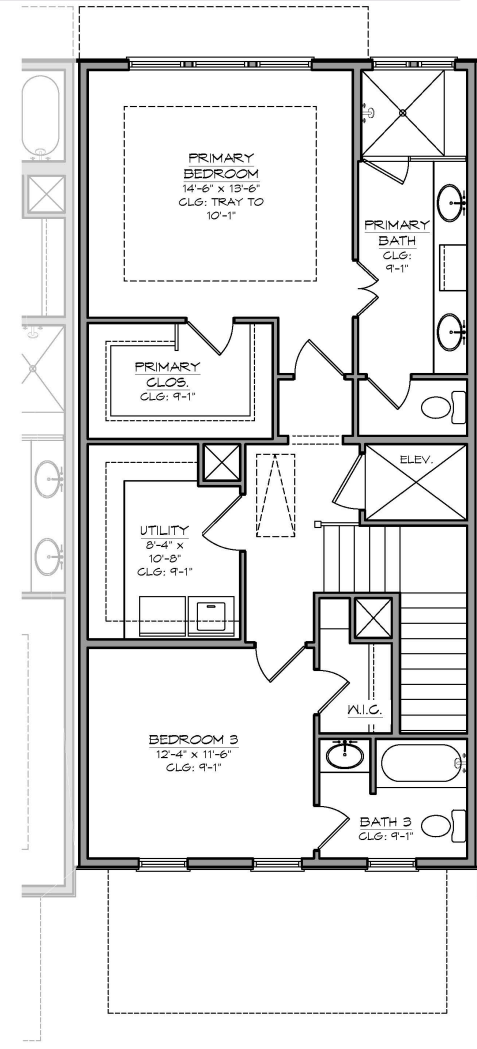
472 Sq. Ft.



WH2475

MAIN LEVEL PLAN

882 Sq. Ft.



WH2475

UPPER LEVEL PLAN

896 Sq. Ft.



STOCKHOLM



3006 Wynn Circle
Lot 2476 - 22' - 2,364 sq. ft.
3 Bedrooms - 3.5 Bathrooms



WESTHAVEN

187 Front Street, Suite 100 | Franklin, Tennessee 37064
615-599-1764 | WesthavenTN.com



SOUTHERN LAND
COMPANY



NOVA



3000 Wynn Circle
Lot 2477 - 24' - 2,358 sq. ft.
3 Bedrooms - 3.5 Bathrooms



WESTHAVEN

187 Front Street, Suite 100 | Franklin, Tennessee 37064
615-599-1764 | WesthavenTN.com



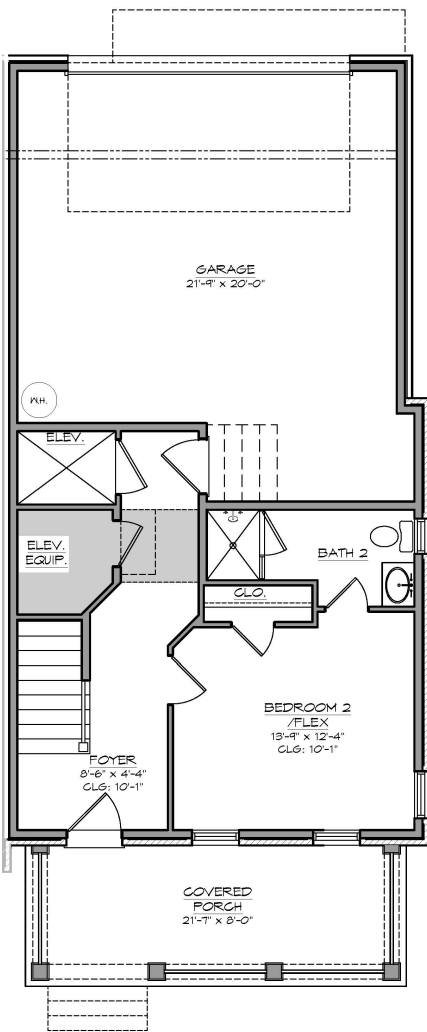
SOUTHERN LAND
COMPANY

NOVA

Lot # 2477 | 3000 Wynn Circle Franklin, Tennessee 37064



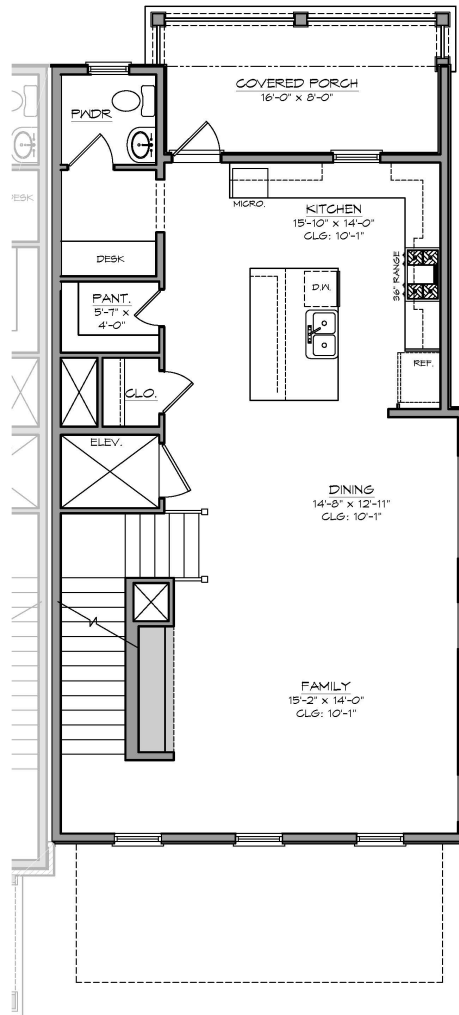
WESTHAVEN



WH2477

LOWER LEVEL PLAN

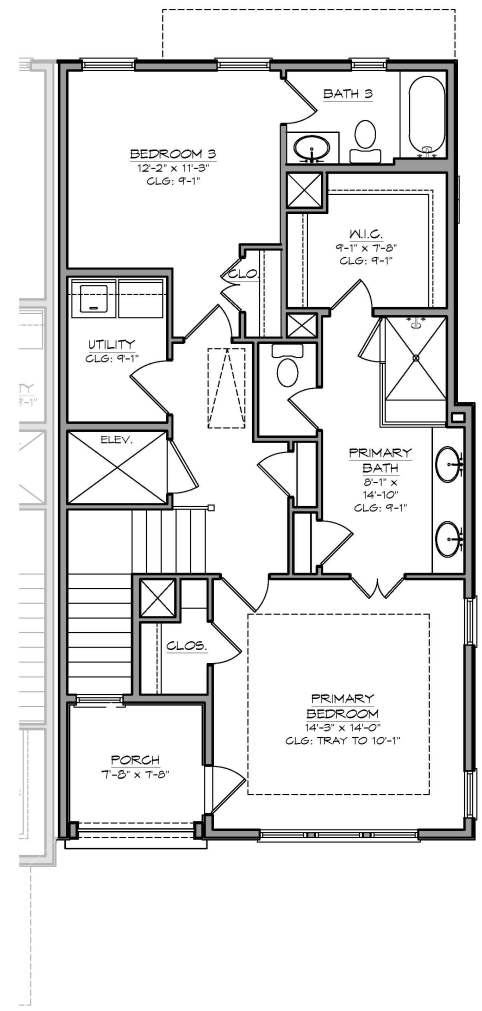
515 Sq. Ft.



WH2477

MAIN LEVEL PLAN

943 Sq. Ft.



WH2477

UPPER LEVEL PLAN

900 Sq. Ft.



WH2473

WH2474

WH2475

WH2476

WH2477

FRONT ELEVATION

*Steps are shown for illustrative purposes only and do not accurately represent the final number or location for the home. These will vary and final number and location to be determined during construction.

© 2023 Southern Land Company, LLC. Drawings, written material, and design concepts shall not be used or reproduced in whole or part in any form or format without prior written consent of Southern Land Company, LLC.

SLC
HOMES

SECTION 62 TOWNHOMES

WESTHAVEN LOTS 2473-2477
FRANKLIN, TN
SCALE: 1/8" = 1'-0"



WH2473

LEFT ELEVATION

*Steps are shown for illustrative purposes only and do not accurately represent the final number or location for the home. These will vary and final number and location to be determined during construction.

© 2023 Southern Land Company, LLC. Drawings, written material, and design concepts shall not be used or reproduced in whole or part in any form or format without prior written consent of Southern Land Company, LLC.

SLC
HOMES

SECTION 62 TOWNHOMES

WESTHAVEN LOTS 2473-2477
FRANKLIN, TN
SCALE: 1/8" = 1'-0"



REAR ELEVATION

*Steps are shown for illustrative purposes only and do not accurately represent the final number or location for the home. These will vary and final number and location to be determined during construction.

© 2023 Southern Land Company, LLC. Drawings, written material, and design concepts shall not be used or reproduced in whole or part in any form or format without prior written consent of Southern Land Company, LLC.

SLC
HOMES

SECTION 62 TOWNHOMES

WESTHAVEN LOTS 2473-2477
FRANKLIN, TN
SCALE: 1/8" = 1'-0"



WH2477

RIGHT ELEVATION

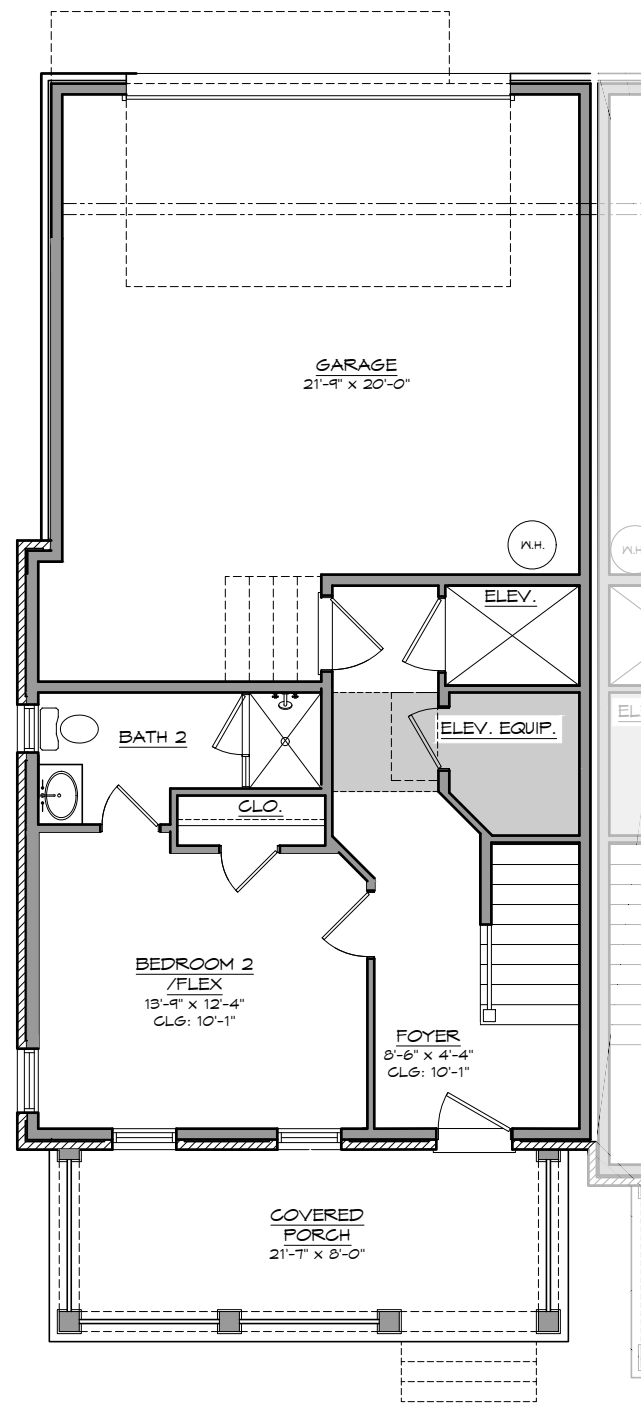
*Steps are shown for illustrative purposes only and do not accurately represent the final number or location for the home. These will vary and final number and location to be determined during construction.

© 2023 Southern Land Company, LLC. Drawings, written material, and design concepts shall not be used or reproduced in whole or part in any form or format without prior written consent of Southern Land Company, LLC.

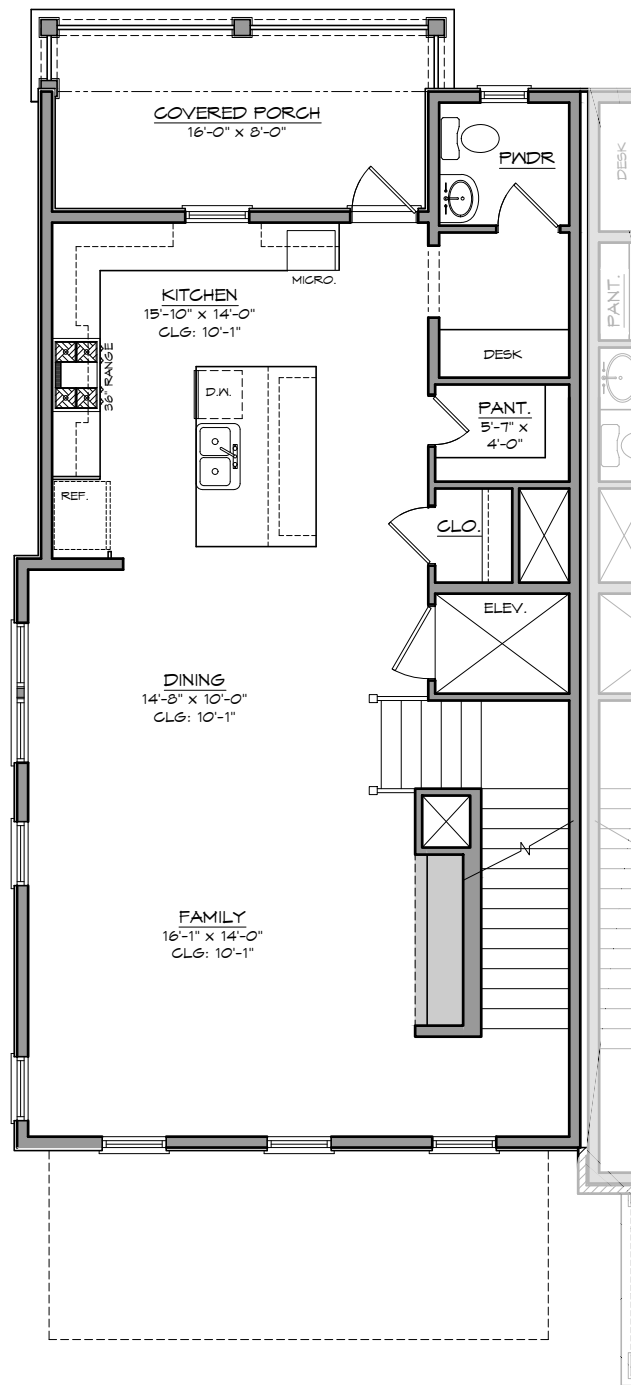
SLC
HOMES

SECTION 62 TOWNHOMES

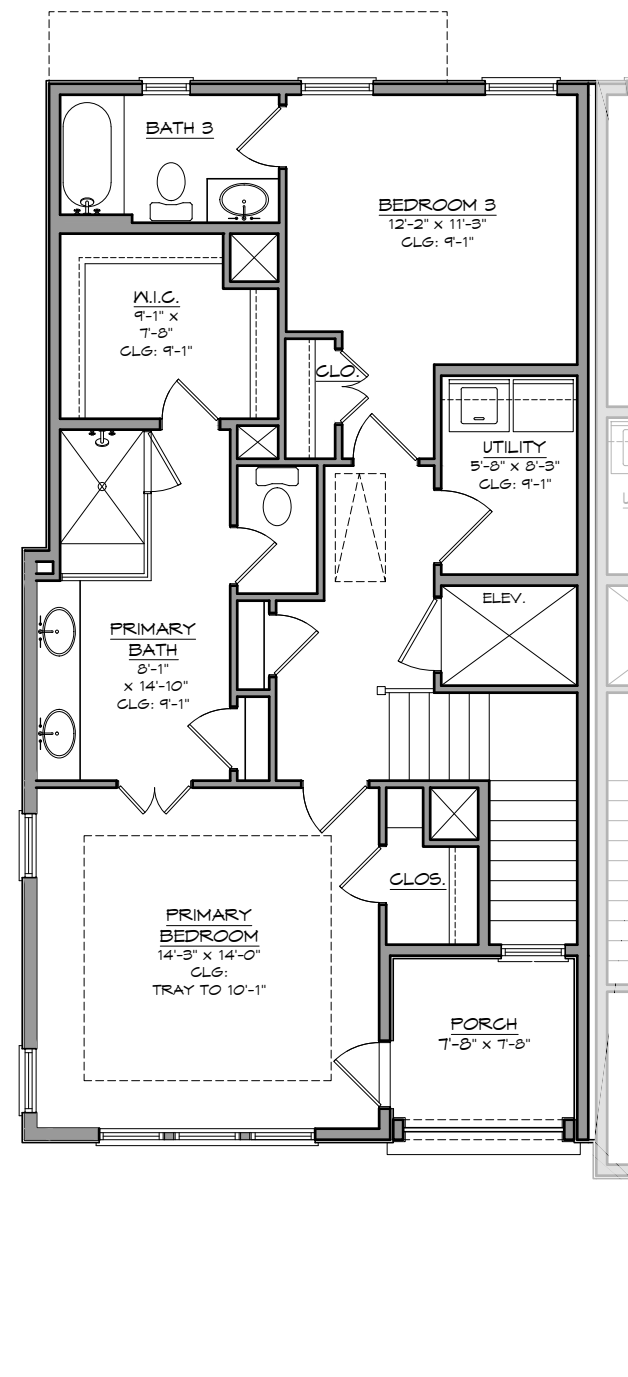
WESTHAVEN LOTS 2473-2477
FRANKLIN, TN
SCALE: 1/8" = 1'-0"



WH2473
LOWER LEVEL PLAN



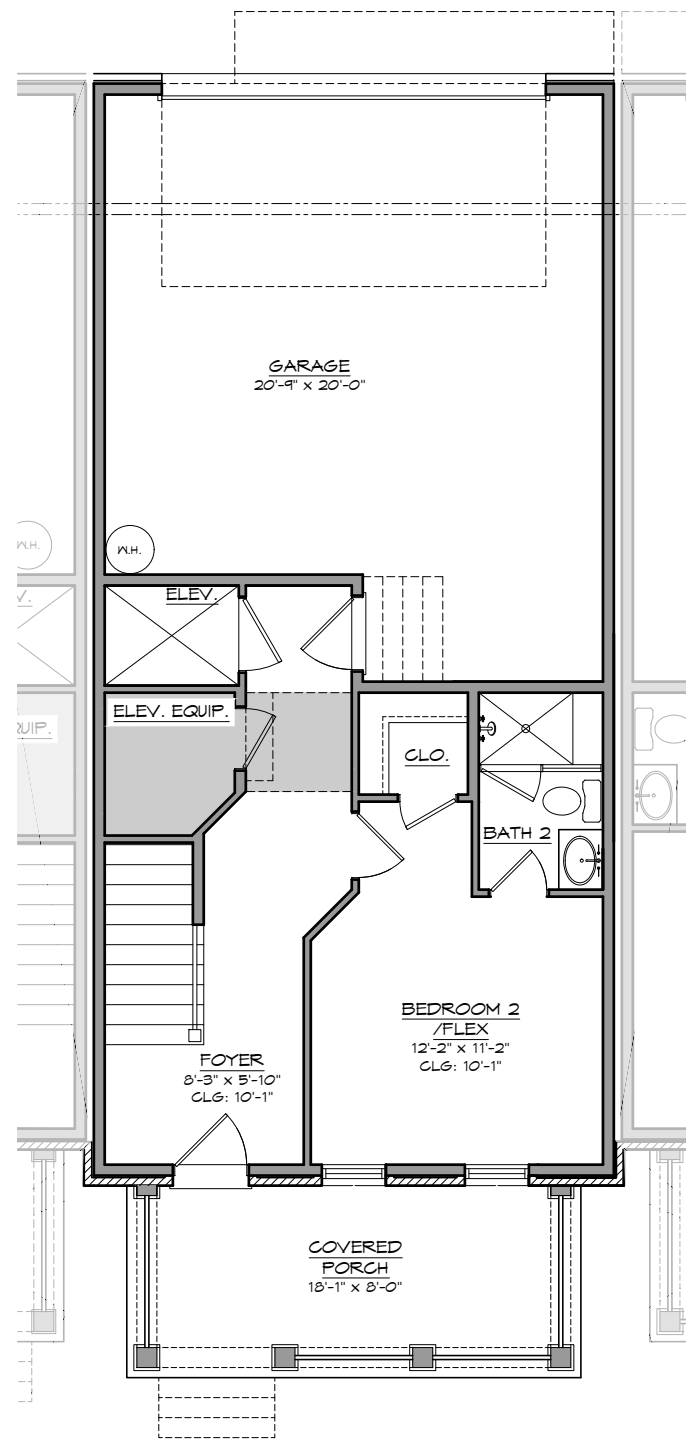
WH2473
MAIN LEVEL PLAN



WH2473
UPPER LEVEL PLAN

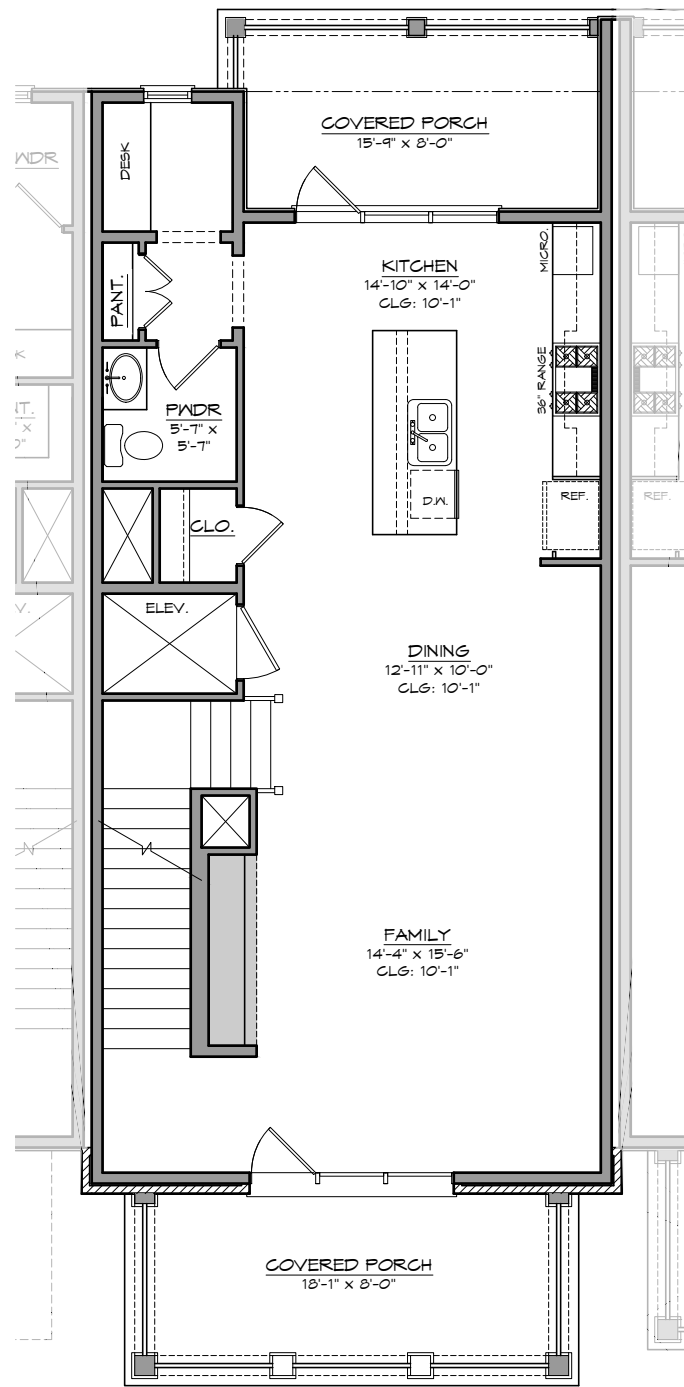
*Steps are shown for illustrative purposes only and do not accurately represent the final number or location for the home. These will vary and final number and location to be determined during construction.

© 2023 Southern Land Company, LLC. Drawings, written material, and design concepts shall not be used or reproduced in whole or part in any form or format without prior written consent of Southern Land Company, LLC.



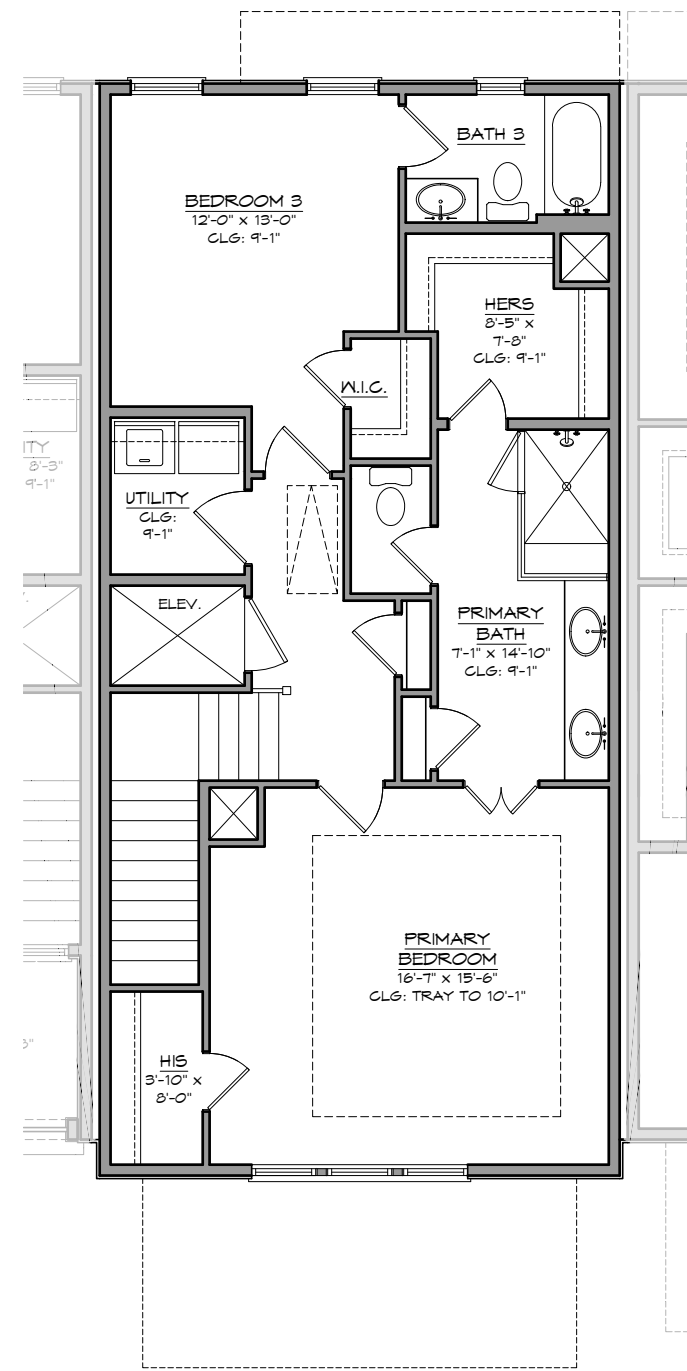
WH2474

LOWER LEVEL PLAN



WH2474

MAIN LEVEL PLAN

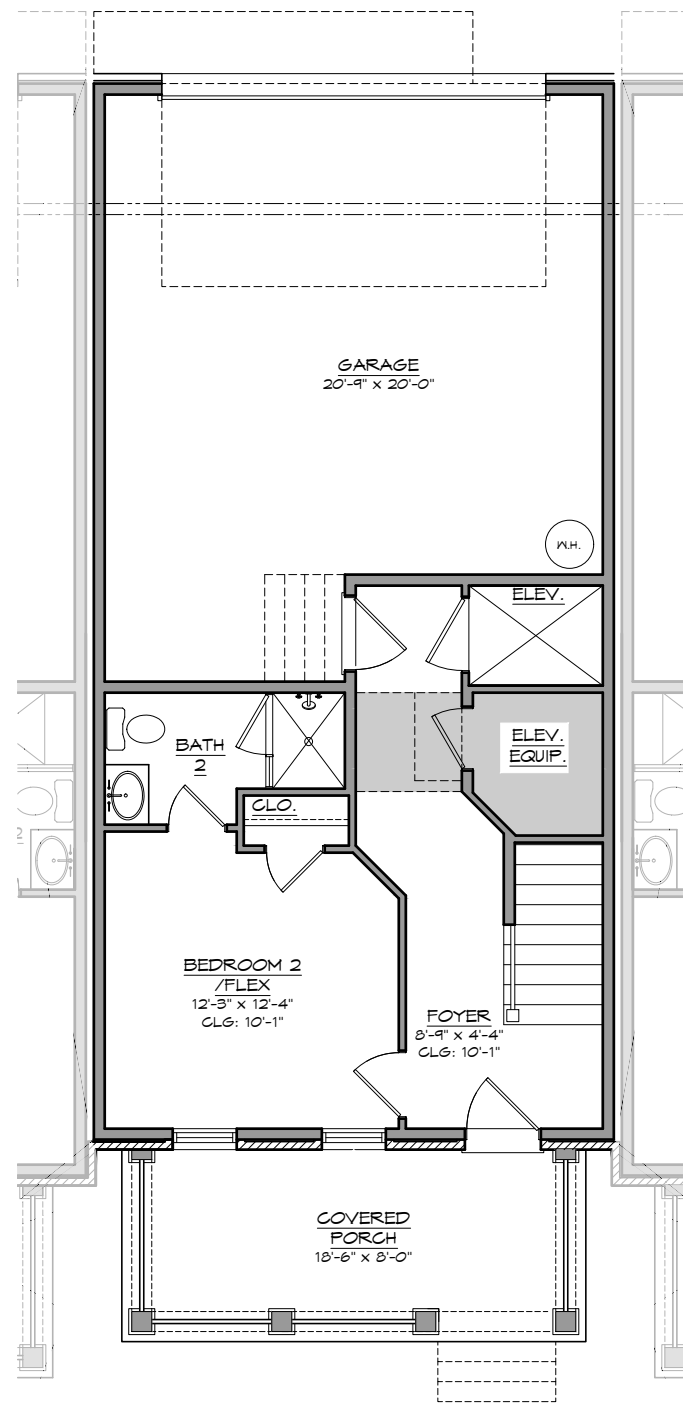


WH2474

UPPER LEVEL PLAN

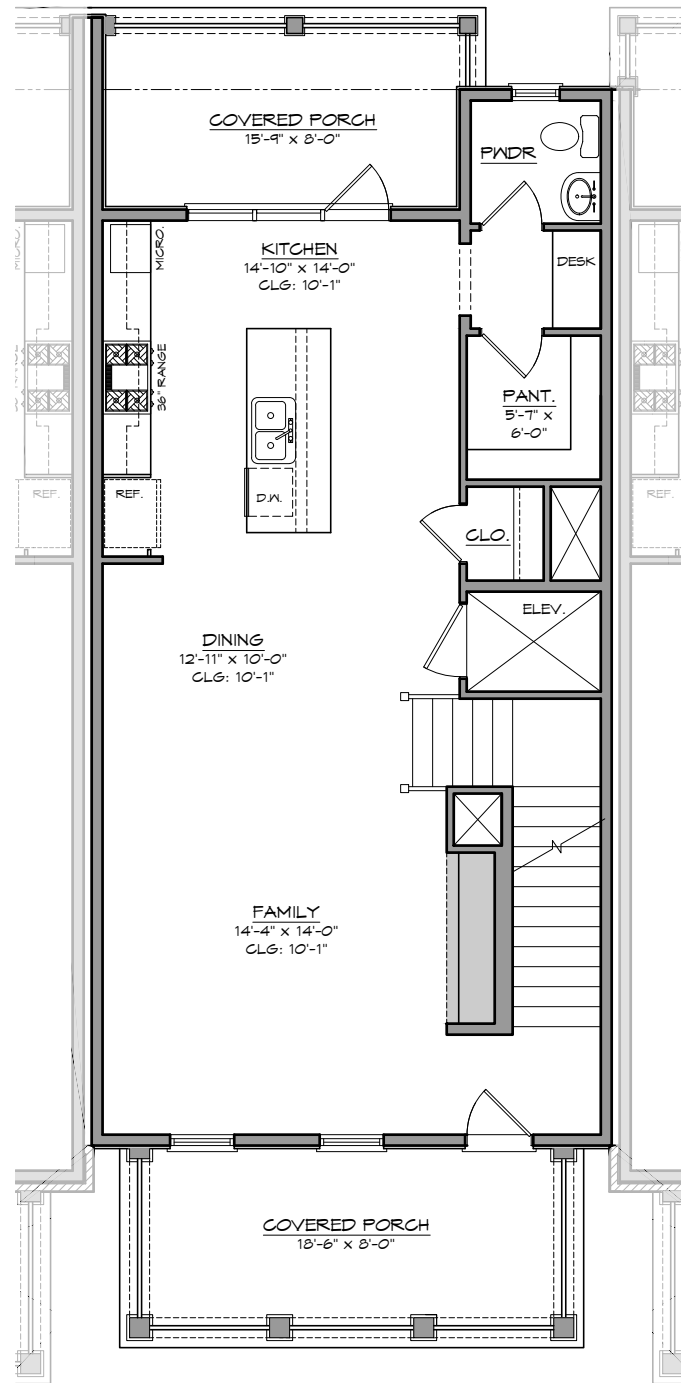
*Steps are shown for illustrative purposes only and do not accurately represent the final number or location for the home. These will vary and final number and location to be determined during construction.

© 2023 Southern Land Company, LLC. Drawings, written material, and design concepts shall not be used or reproduced in whole or part in any form or format without prior written consent of Southern Land Company, LLC.



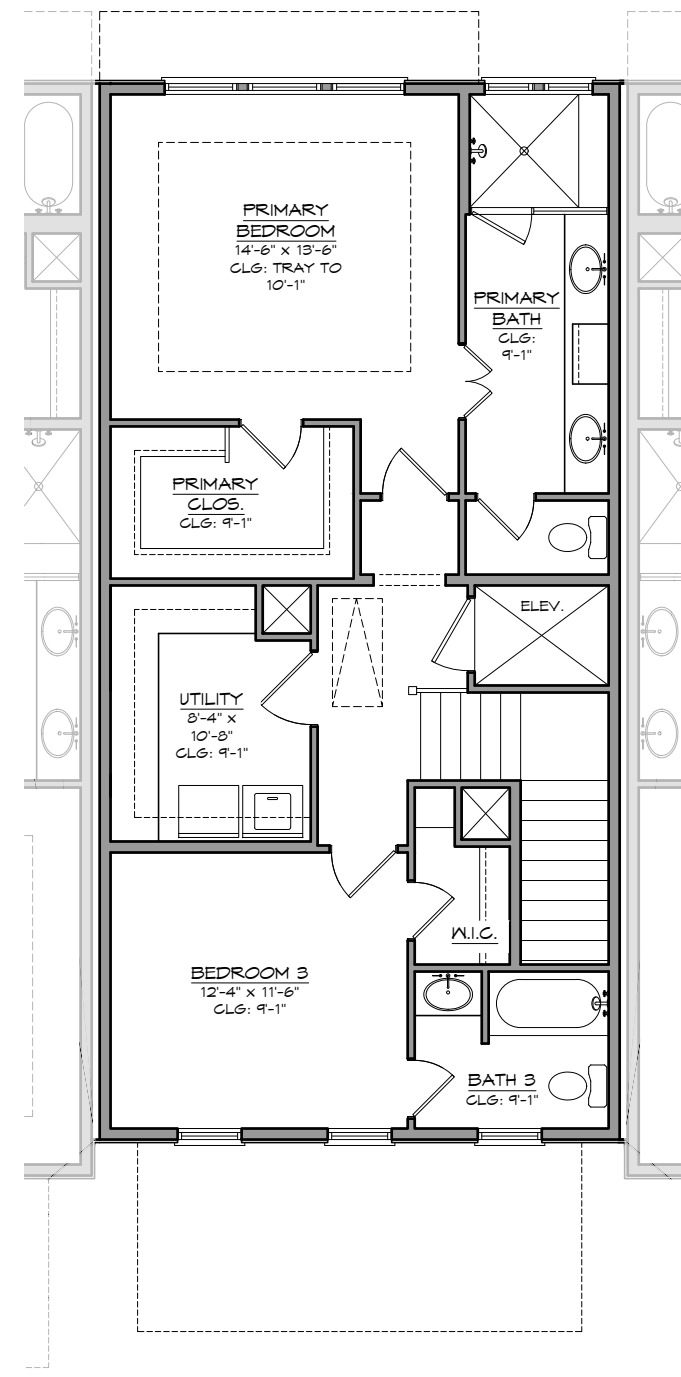
WH2475

LOWER LEVEL PLAN



WH2475

MAIN LEVEL PLAN

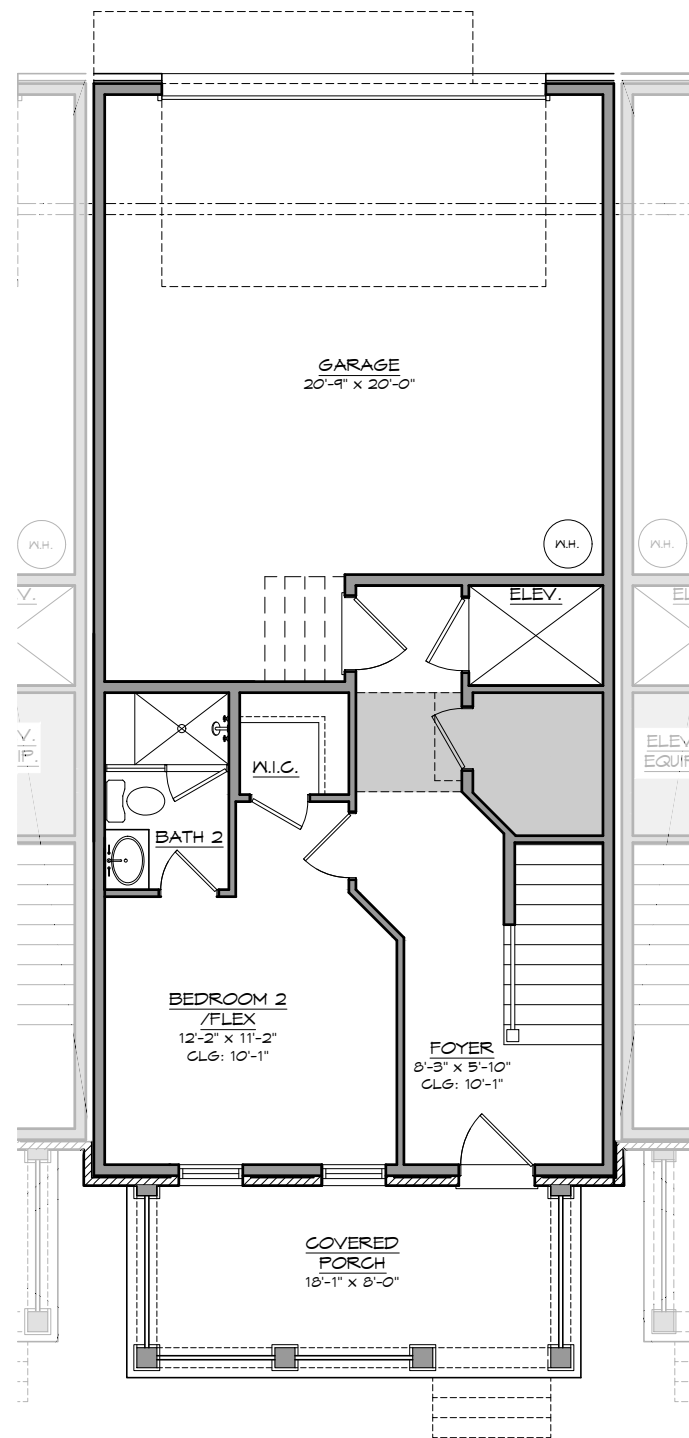


WH2475

UPPER LEVEL PLAN

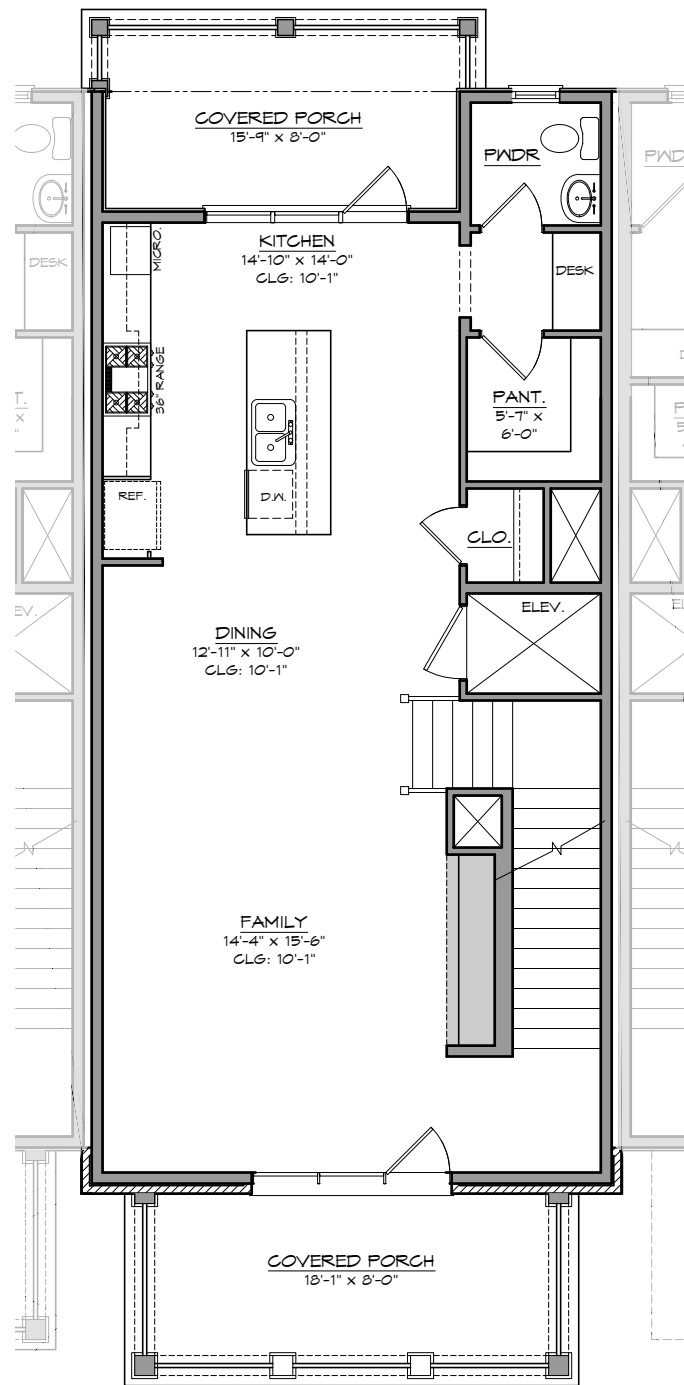
*Steps are shown for illustrative purposes only and do not accurately represent the final number or location for the home. These will vary and final number and location to be determined during construction.

© 2023 Southern Land Company, LLC. Drawings, written material, and design concepts shall not be used or reproduced in whole or part in any form or format without prior written consent of Southern Land Company, LLC.



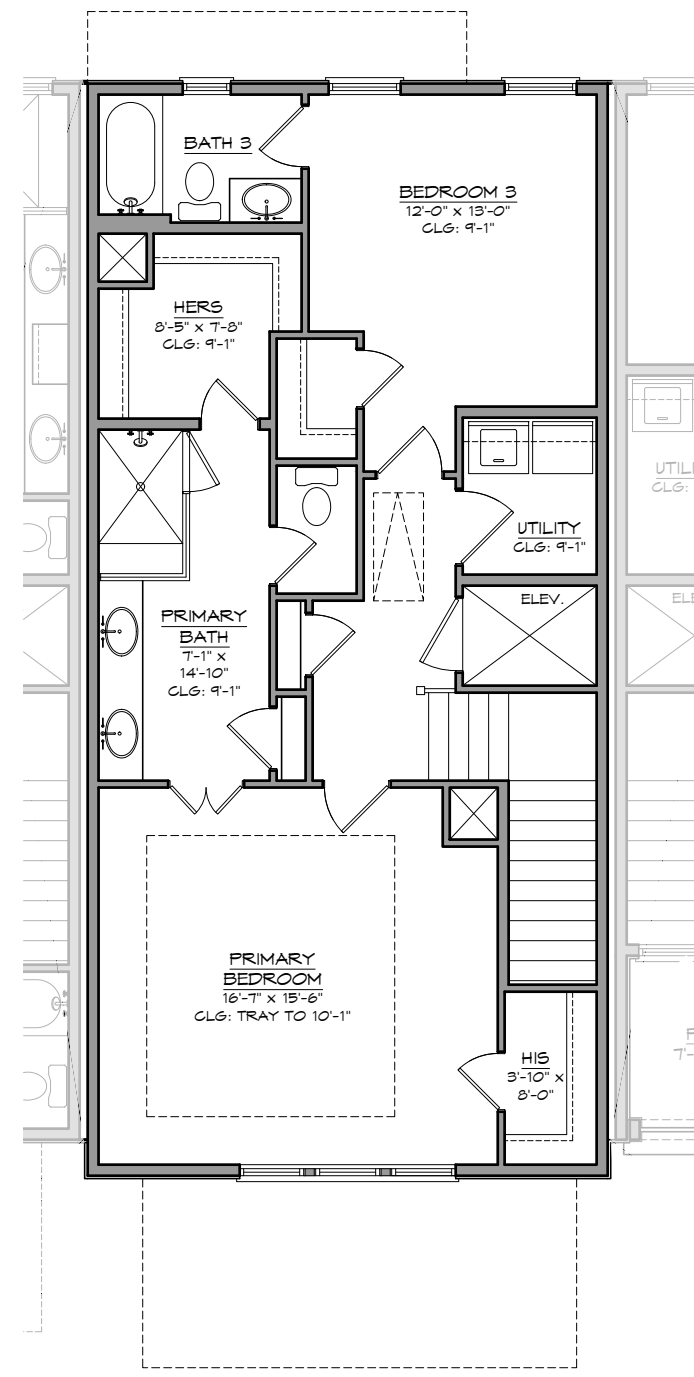
WH2476

LOWER LEVEL PLAN



WH2476

MAIN LEVEL PLAN

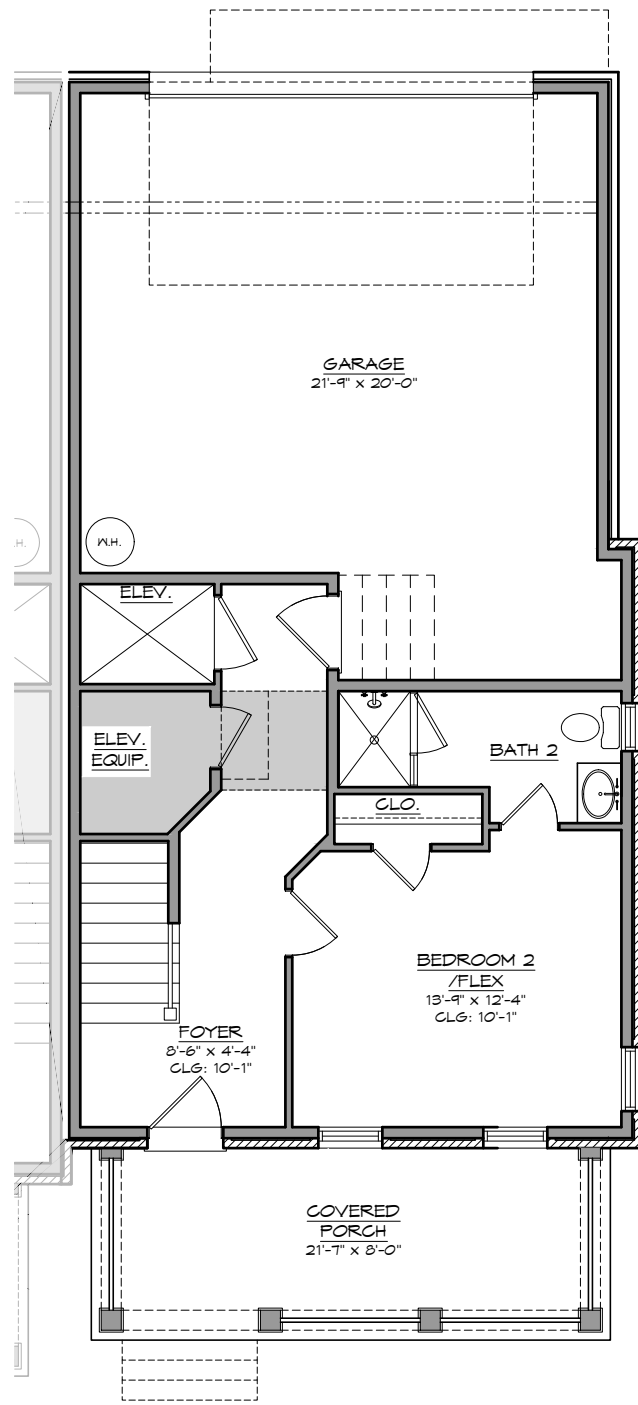


WH2476

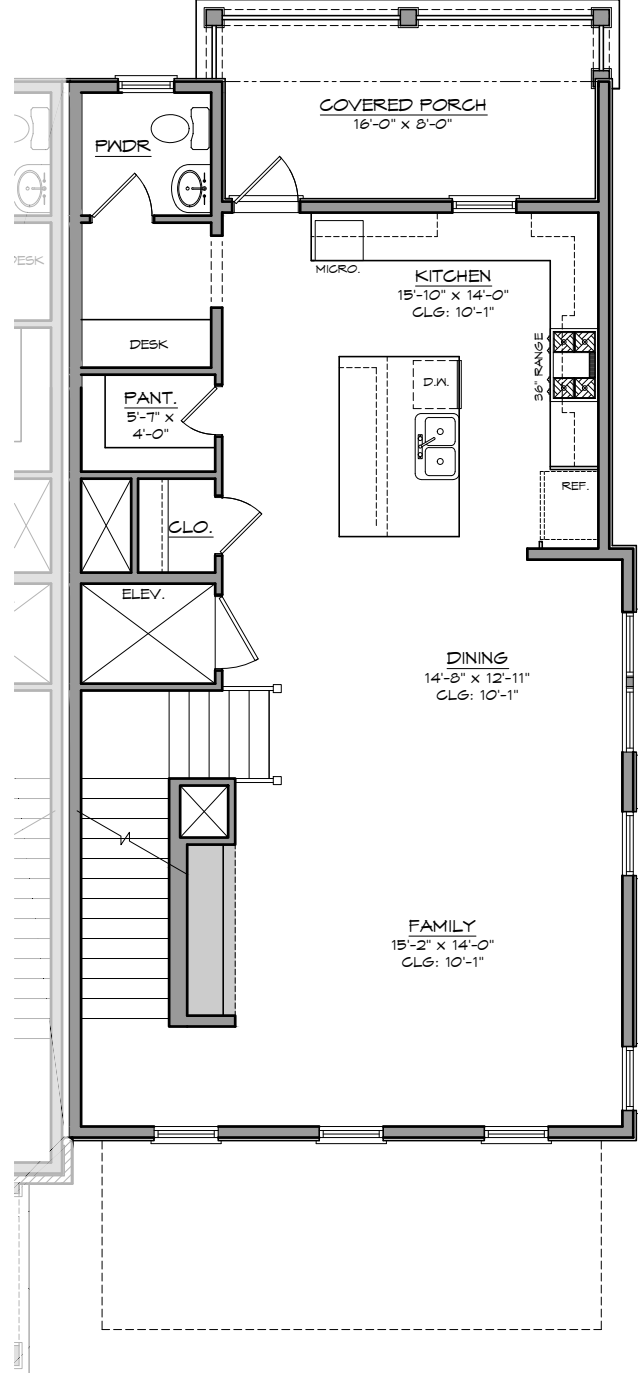
UPPER LEVEL PLAN

*Steps are shown for illustrative purposes only and do not accurately represent the final number or location for the home. These will vary and final number and location to be determined during construction.

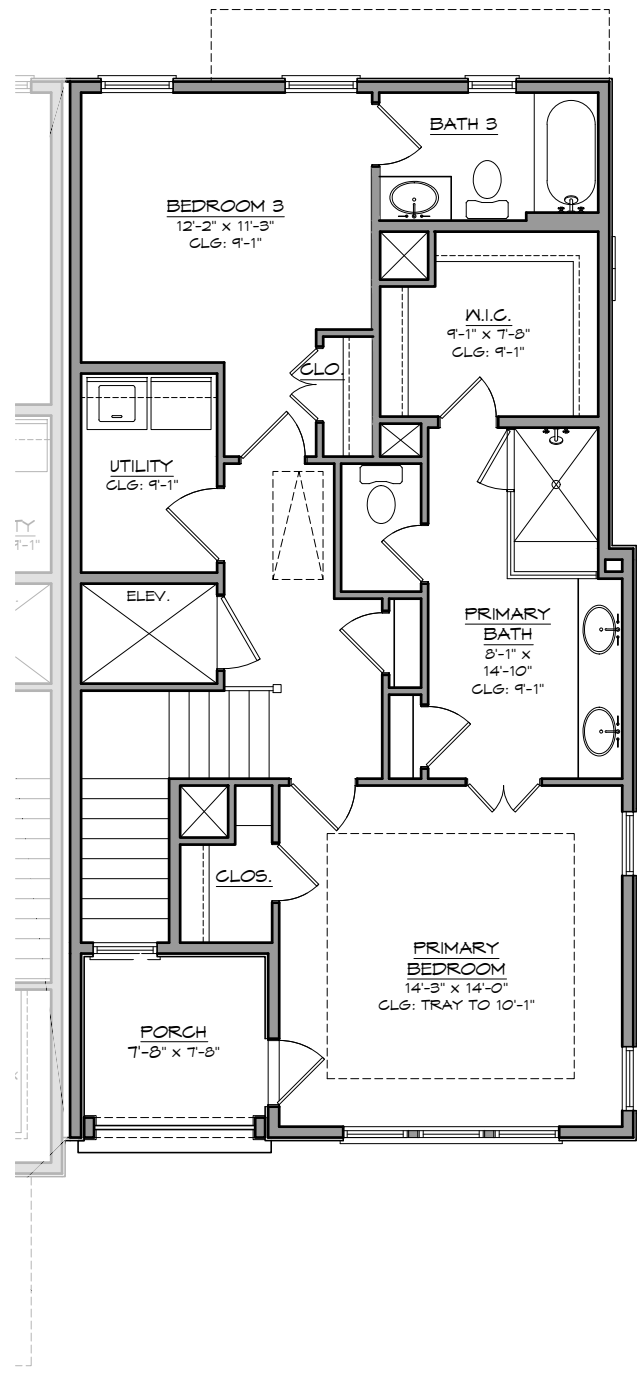
© 2023 Southern Land Company, LLC. Drawings, written material, and design concepts shall not be used or reproduced in whole or part in any form or format without prior written consent of Southern Land Company, LLC.



WH2477
LOWER LEVEL PLAN



WH2477
MAIN LEVEL PLAN



WH2477
UPPER LEVEL PLAN

*Steps are shown for illustrative purposes only and do not accurately represent the final number or location for the home. These will vary and final number and location to be determined during construction.

© 2023 Southern Land Company, LLC. Drawings, written material, and design concepts shall not be used or reproduced in whole or part in any form or format without prior written consent of Southern Land Company, LLC.



SECTION 62 TOWNHOMES

**WESTHAVEN LOTS 2473-2477
 FRANKLIN, TN
 SCALE: 1/8" = 1'-0"**

Exterior/Energy Features

- ☞ Low E Windows Standard Throughout the House
- ☞ Split HVAC Systems with an Upgraded programmable and smart device controllable thermostat on the middle level and standard digital thermostat on the 3rd floor
- ☞ 50gal electric water heater with recirc pump
- ☞ Architectural shingles with a 30-year manufacturer warranty
- ☞ Brushed concrete on all lower porches, walkways, and driveways
- ☞ Custom front yard landscape plan with automatic irrigation.
- ☞ Light on photocell at Garage door
- ☞ 8' tall Garage door(s) with openers
- ☞ Weatherproof electrical outlets (per plan)
- ☞ Frost proof exterior faucet (per plan)
- ☞ Raised slab foundation
- ☞ WIRSBO® plumbing system with less heat loss than copper

Kitchen

- ☞ Wellborn Forest maple flat panel cabinets with "Classic" boxes and 42" uppers in a selection of different door styles (paint or stain) with soft close doors and drawers
- ☞ Chimney Style Hood above the Cooktop with Vent hood
- ☞ Double Trash pull out included (per plan)
- ☞ Designer selected Quartz countertops with a tile backsplash
- ☞ Large stainless steel under-mount sink and a Delta® faucet
- ☞ Appliance Package from BOSCH in STAINLESS
 - 36" Range w/ Induction Cook-top HIS8655U
 - 24" Microwave Drawer HMD8541UC
 - Tall Tub Dishwasher SHXM4AY55N
 - 36" Counter Depth Fridge B36CT80SNS
- ☞ Durable 1/2 horsepower garbage disposal

Primary Suite

- ☞ Designer selected Engineered hardwood flooring in the Primary Bedroom and Walk-In Closet
- ☞ 36" High Wellborn Forest maple flat panel cabinets (paint or stain)
- ☞ Designer selected Quartz countertops with a Granite Company Supplied Undermount Sink in White
- ☞ Delta® Widespread faucets and bath hardware
- ☞ Designer selected tile flooring in Primary Bathroom
- ☞ Separate shower with Designer selected tile flooring and walls (up to the ceiling) with 3/8" FRAMELESS glass surround and Schluter® Pan Drainage System
- ☞ Walk-in closet with two (2) runs of trim carpenter built MDF shelving
- ☞ White Elongated/Comfort Height Toilet
- ☞ 7" crown moulding in Primary Bedroom

Warranty/Service

- ☞ 1 Year Workmanship Warranty
- ☞ 2 Year Mechanical and Structural Warranty
- ☞ Dedicated Warranty Team performs visits at 11 months after closing

Interior Features

- ☞ Designer selected Engineered hardwood flooring in all non-tiled areas of the home.
- ☞ 8'0" smooth SOLID core interior doors on both floors (per plan)
- ☞ Main staircase to have white treads and painted risers with stained RED oak handrail and painted square pickets on the railing (per plan)
- ☞ Attractive 7" base on all floors, with 3" base in the Garage
- ☞ One Piece 7" crown in the main rooms (no baths, utility room. or closets)
- ☞ Casing around all windows and doors
- ☞ Designer selected lighting package
- ☞ BHP® hardware on all interior doors
- ☞ Designer selected tile flooring in the Utility Room
- ☞ Utility Room (per plan) to have one run of Flat Panel cabinets above the Washer and Dryer (paint or stain)
- ☞ 36" tall Wellborn Forest cabinets with wood top in the Family Room
- ☞ One (1) run of MDF shelving in all Secondary Bedrooms and Coat Closets
- ☞ Four (4) runs of MDF shelving in all Pantry and Linen Closets
- ☞ Designer selected paint from the standard Sherwin Williams Paint® selections
- ☞ 3" Base in the Garage and block painted grey
- ☞ All closets and Garage to be painted white or ceiling color
- ☞ No mirrors, buyer to provide and install after closing

Secondary Bathrooms

- ☞ White Elongated/Comfort Height Toilet in the Powder Room (per plan)
- ☞ 36" High Wellborn Forest Cabinetry maple flat panel cabinets
- ☞ Lower level walk in Shower with Designer selected tile flooring and walls (up to the ceiling) with 3/8" FRAMELESS glass surround and Schluter® Pan Drainage System
- ☞ Upstairs Secondary bathrooms to have fiberglass tub and tile surround (per plan and up to the ceiling) with Delta™ shower faucets (no door)
- ☞ Designer selected Quartz countertops with a Granite Company Supplied Undermount Sink in White
- ☞ Delta™ lavatory faucets with matching bath hardware
- ☞ Designer selected tile floors in all Secondary Baths
- ☞ White elongated front toilets in Secondary Bathrooms

Included Elevator

- ☞ See separate Elevator Spec Sheet for Details
- ☞ Interior Cab flat panels painted the standard interior trim color

Electrical/Technological

- ☞ One (1) multi-media outlet in the Family Room
- ☞ Cable and Ethernet Outlet in all bedrooms
- ☞ LED Under-cabinet Lighting in the Kitchen
- ☞ LED bulbs in the Can Lights
- ☞ PREWIRE ONLY for a Security package including (2) motion detectors and (1) keypad.
- ☞ Carbon Monoxide/Smoke detectors installed per code
- ☞ White toggle switches and plugs
- ☞ Recessed Structured Wire Service Center for LV and Security Panel

*All features, amenities, prices, and availability are subject to change without notice. Dimensions and square footage are approximate and may vary with actual construction. The builder reserves the right to make modifications or revisions to features, plans, programs, and pricing without prior notice. This brochure is for illustration purposes only and is not part of a legal contract. **VERSION 01/12/24***

Life. Elevated.®

At Symmetry, we believe in *quality*. Our expertly engineered residential elevator provides safe accessibility to all floors and adds value to your home.

Standard Features

- Travel: Maximum of 50'0" (minimum 12 inches between stops)
- Speed: 40 fpm
- Rated Capacity: 1,000 lbs.
- Stops: Three
- Opening: Single
- Warranty: Three-year limited parts

Safety Features

- Slack chain safety device
- Two upper and one lower final limits
- Machine stop switch
- Motor controller supply disconnects (located in controller)
- Car light supply disconnects (located in controller)
- Pit stop switch
- Car-top stop switch
- In-car emergency stop switch and alarm
- Safety switch for car gates/doors
- Battery backup emergency car lights and alarm
- Electro-mechanical hoistway door locking device
- Enhanced gate/bypass monitor
- Unauthorized hoistway entry detection

Brushed Stainless Round Metal Handrail



Black Laminate

Red Oak painted
the trim color

Brushed Stainless

Brushed Stainless COP & Phone Box

